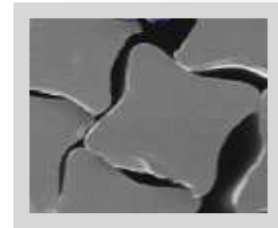
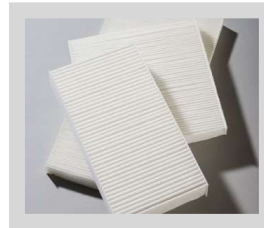




Global
Value Creator

NC-967

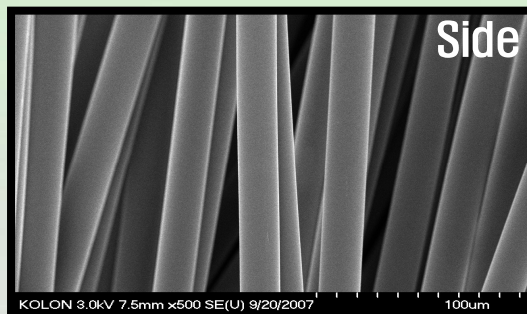
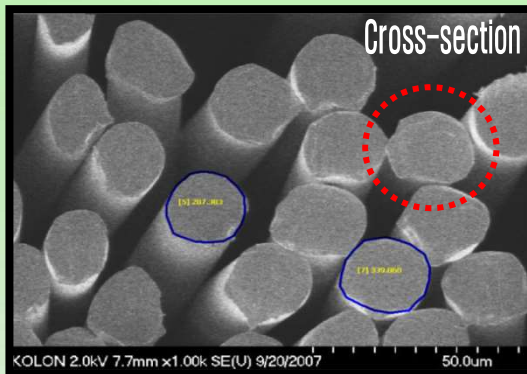
Novel Cross-Section of PP Fiber



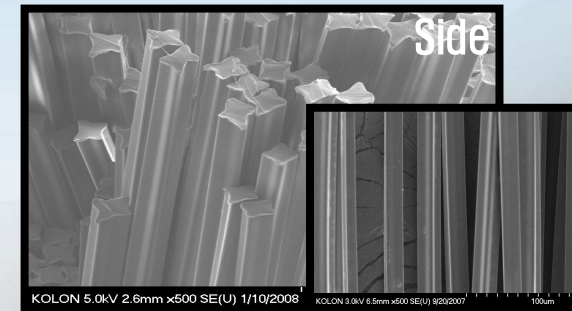
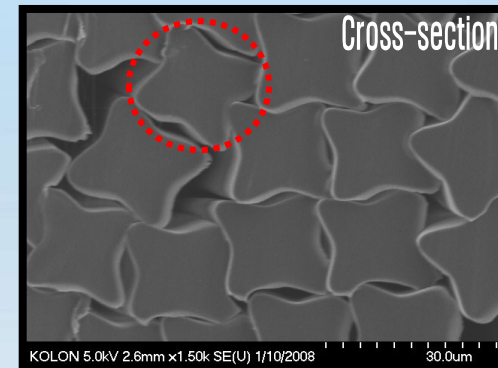
NC-967

- ✓ Specially designed new PP staple fiber.
- ✓ Harmonized fibers with Tetra-lobal cross-section and Round cross-section.
 - ❖ Blend ratio = Tetra-lobal : Round (67% : 33%)

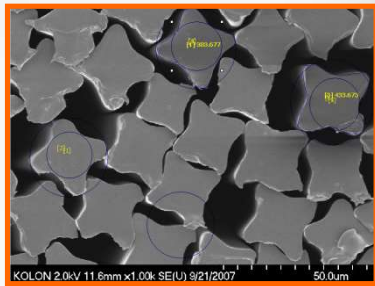
Round fibers



Tetra-lobal fibers



Key features and Application



◆ Key features of NC-967

- 4 channels in the longitudinal direction
- Increase of specific surface area (50%)
- Angular edges on the cross-section
- Differentiated light reflection and transmission characteristics
- Chemical Resistance

Wipes

- ❖ **Process : Spunlace, Thermal bond**
 - ✓ Improved Wiping (Cleaning) power
 - ✓ Improved Absorptive capacity
 - ✓ More Light weight
 - ✓ More Bulkier

Diaper

- ❖ **Process : Thermal point-bond, Air-through bond**
 - ✓ Excellent absorption & dispersion property
 - ✓ Improved thermal point-bonding strength
 - ✓ More light weight NWF (Improved shielding)
 - ✓ Quick drying (comfortableness)
 - ✓ Soil-hinding property (e.g. bloodstain)

Filter

- ❖ **Process : Spunlace, Needle-punch**
 - ✓ Increase of specific surface area
 - Improved filtration efficiency
 - ✓ Angular edges & Carding process
 - Increased electrostatic force

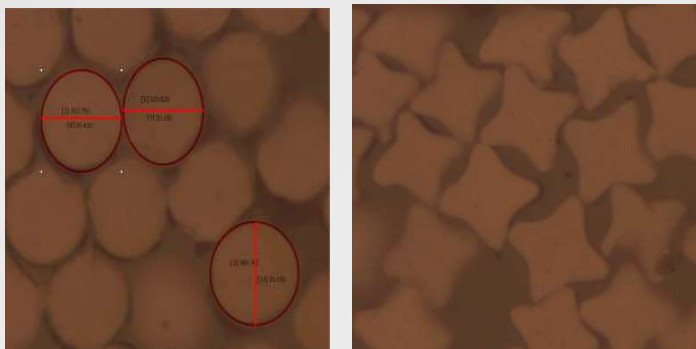
Physical Properties of NC-967

Nonwoven Process	Denier (De')	Tenacity (g/De')	Elongation (%)	Crimp (ea/cm)	Total Finish (%)	Length (mm)	Remark
Spunlace Needle-punch	1.5 ±0.2	3.4 ±0.2	160 ±40	7.0 ±1.0	0.30 ±0.05	40 / 51	Foamless Hydrophilic
	2.0 ±0.2	3.0 ±0.2	210 ±40	7.0 ±1.0	0.30 ±0.05	40 / 51	
Thermal-bond Needle-punch	2.2 ±0.2	2.15 ±0.2	370 ±50	6.5 ±1.0	0.40 ±0.10	40 / 51	Normal Hydrophilic

※ Properties can be varied and customized to suit customer's requirements

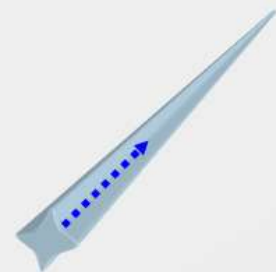
Features and Benefits

- Increase of specific surface area (50%)
- Angular edges on the cross-section



- 4 channels in the longitudinal direction
- ☞ Improved liquid wicking property

1.5 De'
Cotton 100%
40gsm
Spunlace

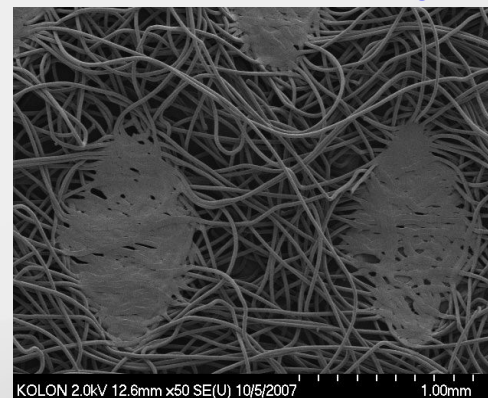


1.5 De' Cotton + 1.6 De' **NC-900**
70:30
40gsm
Spunlace

- Differentiated light reflection and transmission characteristics
- ☞ Improved shielding, Soil-hiding property



- Special Skin-core PP Fiber
- ☞ Improved Thermal bonding strength



Applications

