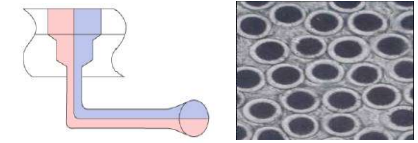
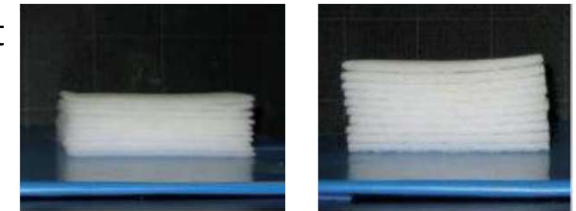


HP-150HB

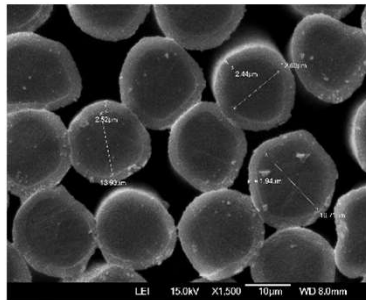


- **Specification : PE/PP Eccentric 5.0De'×51mm (Bright)**
- **Applications : ADL** (acquisition and distribution layers) **or SAP Layer** for hygiene products
- **Feature and benefits**
 - ✓ Higher bulkiness and higher resilience than normal bico fibers
 - ✓ Can make the same bulkiness NWF with more light weight
 - ✓ Very fast liquid acquisition and distribution
 - ✓ Good processability (Less powder, good cardability)

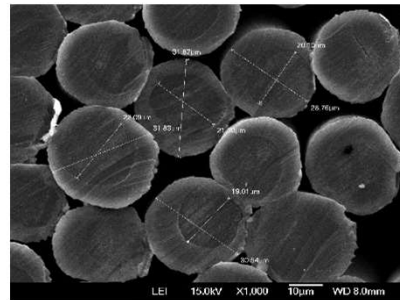


※ Comparison of cross-section

[Centric]

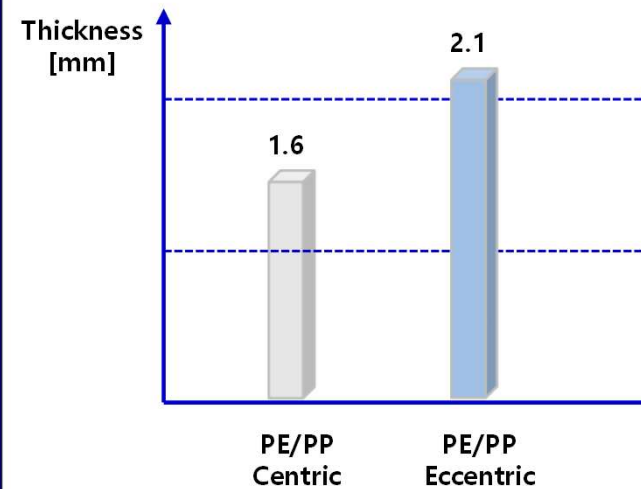


[Eccentric]



※ Comparison of NWF thickness

- 5De', 30gsm Nonwovens
- Thickness measuring (Place on 120g acrylic block)



Denier (De')	Tenacity (g/De')	Elongation (%)	Spin finish (%)	Crimp NO (ea/cm)	Length (mm)
5.0	3.9	110	0.25	5.0	51